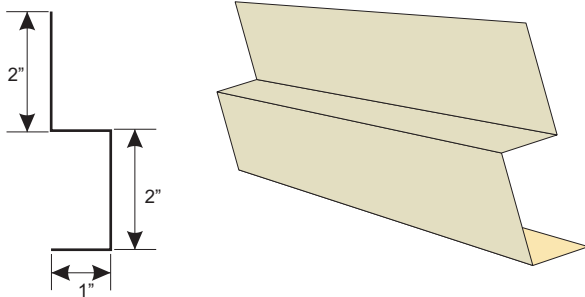




Tamlyn Color Flashing

2" Trim Piece

PRODUCT DETAIL



Custom sizes available to fit your specifications !

DESIGN FEATURES

Design to provide minimum of 2" clearance between James Hardie siding products and roofs, decks, paths, steps, driveways or any other solid surfaces.

INSTALLATION

Maintain 2" minimum clearance between the bottom course of fiber-cement siding and an adjoining roof, stairway, sidewalk, deck, or driveway to meet the fiber cement siding installation requirements.

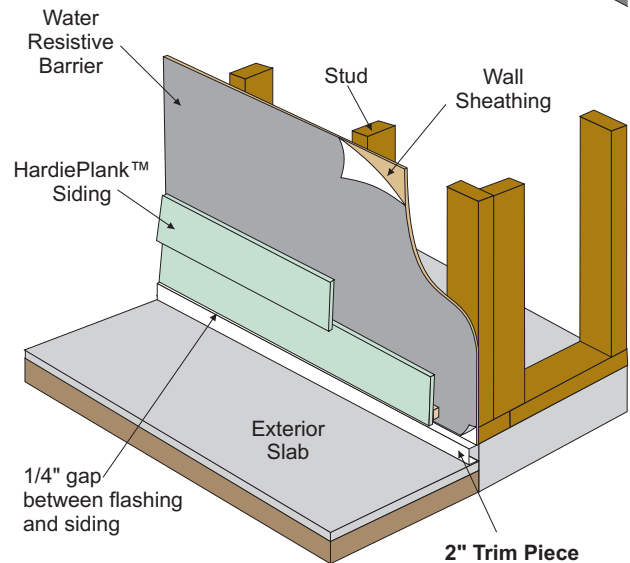
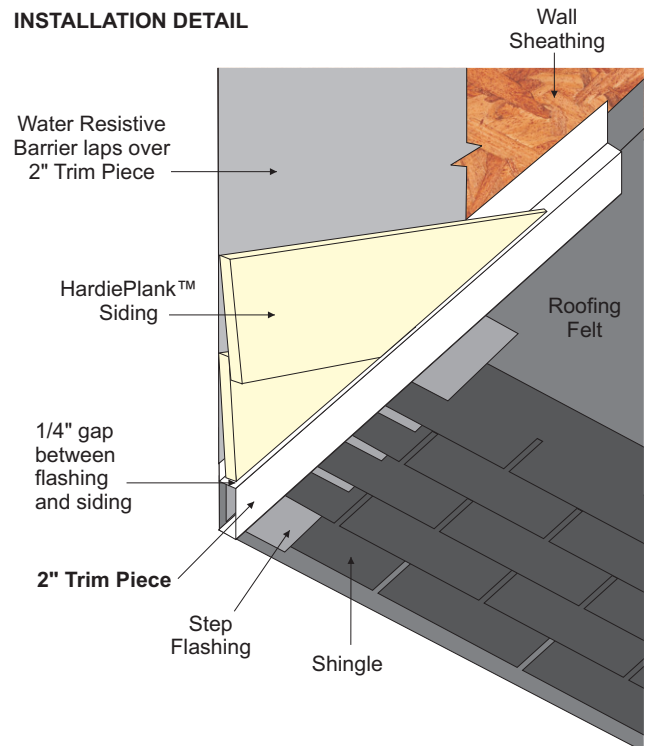
MATERIAL

3105-type aluminum sheet coated on both sides with Dymalar® 2000 paint system that is specifically formulated for residential exterior applications.

Standard colors shown below. Other colors available upon request.



INSTALLATION DETAIL



ColorPlus Technology™



ColorPlus Technology logo, Recommended logo, HardiePanel and HardiePlank are trademarks or registered trademarks of James Hardie International Finance B.V.