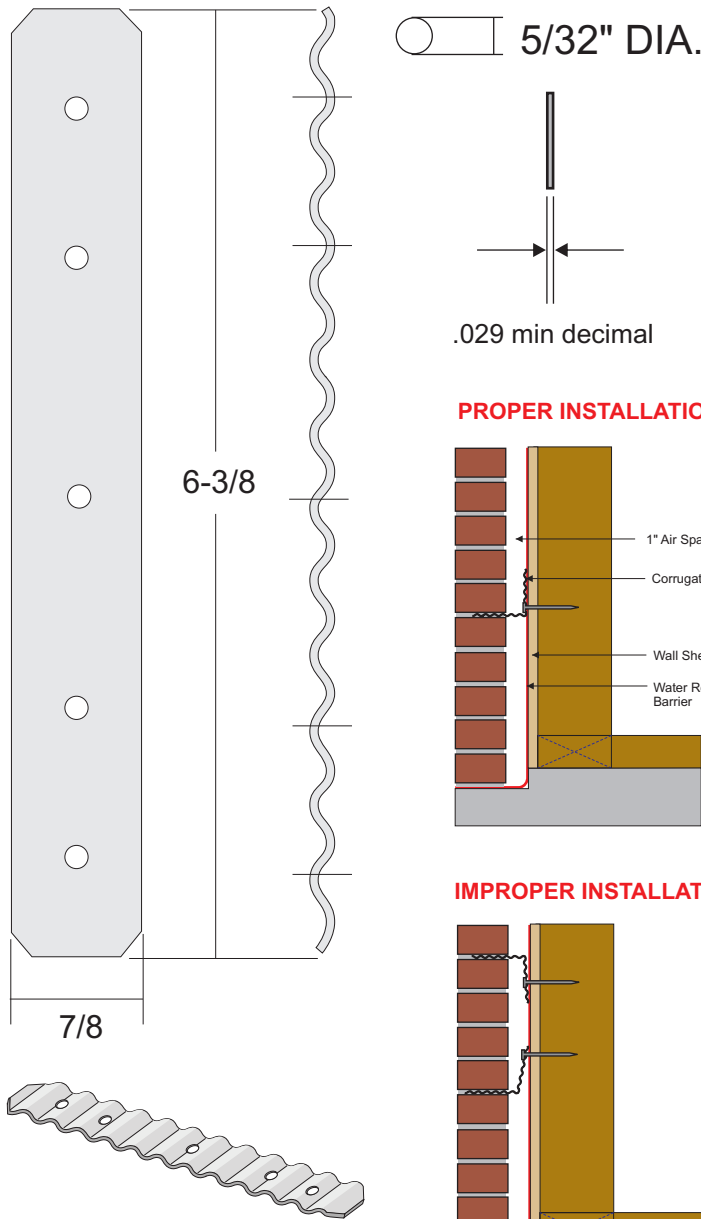


PRODUCT SHEET



MATERIAL: 22 ga. (.029 min decimal) HDG Galvanized - ASTM A 153 Class B-2. Also available in hot dip galvanized after fabrication (in accordance with ASTM A153 B3) and stainless steel (type 3042B) for optimal corrosion resistance. Stainless steel is absolutely best material for longevity.

SIZE: .875" W x 6.375" H x (5) 5/32" Round Holes

NOMINAL THICKNESS*: 0.029"

*The standard thickness tolerance for products made from aluminum sheet material shall be +0.000", -0.003".

DESIGN FEATURES & INSTALLATION SUGGESTIONS: 22 gauge corrugated wall ties are only used on wood stud construction.

Wall ties must be installed at not less than one per three square feet of wall area, not more than 32 inches apart horizontally, and not more than 16 inches apart vertically.

Nails should be sized 8d or larger, cement-coated or galvanized (8d nails are 2.5" long).

Typically, wood stud framing is on 16" centers, so the limit of 32" on center horizontally would permit one tie in every other stud, but the one tie per three square feet requirement would then limit the vertical spacing to 13"+, which would require that ties be installed in every fourth course of brick, which may unnecessarily slow down the mason. Therefore, in order to comply with code and maximize mason productivity, it is suggested that a wall tie be attached to each stud (at 16" or 24" o.c.) not to exceed every 16" vertically (6 courses for 2 1/4" high units and 5 courses for 2 3/4" high units)

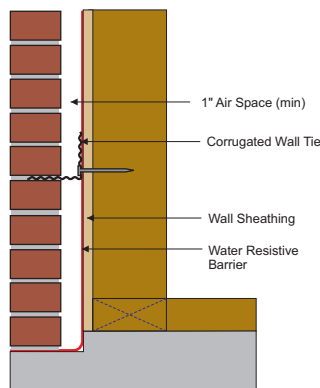
Random installation of wall ties without regard to bed joint height serves no purpose. Wall ties are optimally effective when nailed at the level of the bed joint.

If wall ties are installed by framing carpenters or by someone other than the brick mason, an acceptable practice is to nail them on level horizontal lines corresponding to bed joint heights at regular vertical intervals. This would permit the ties to be anchored in the same course of brickwork. Ties nailed randomly serve little or no purpose. If brick masons install wall ties, follow the same spacing requirements stated above. Tie requirements do not change according to variable properties of brick, such as absorption. Tie installation by competent masons can result in more effective tie strength if the nail is even with the top of the course of brick receiving the tie. If the nail is above or below the top of the course of brickwork receiving the tie, the effectiveness of the tie will be measurably reduced.

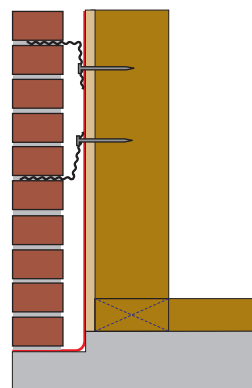
Tamlyn recommends you consult your local building official and follow IRC building code requirements for proper installation and spacing of brick or block ties.

We do understand that each builder has their own method of installing masonry brick ties in place. But it is our opinion that all brick ties should be installed when at the point where a mason or trained installer is laying brick.

PROPER INSTALLATION



IMPROPER INSTALLATION



www.tamlyn.com

R.H. TAMLYN & SONS, LP
13623 PIKE ROAD, STAFFORD TX, 77477
TEL: 281-499-9604, FAX: 281-499-8948

Description:

22 Ga. Galv. Corrugated Straight Wall Tie

Product ID:

BT22SP

**DIMENSIONS ARE IN INCHES
UNLESS OTHERWISE SPECIFIED
DO NOT SCALE DRAWING**

Date(Revised):

10/20/10

DWG #:

BT22SP