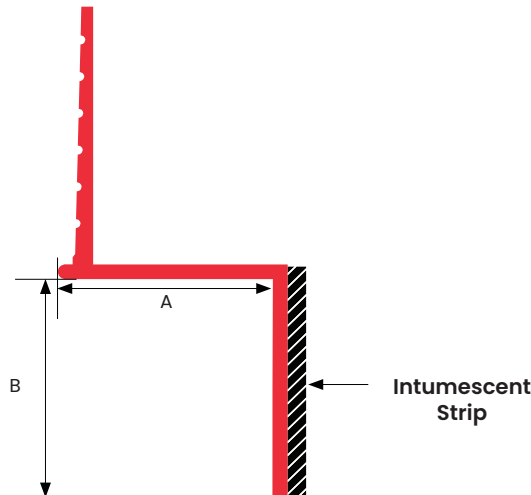


XtremeInterior: Fire Rated Profiles
MZRFR - FIRE RATED Z MOLD

Tech Support / Sales: 800-334-1676
www.tamlyn.com

1 Hour



XtremeInterior by Tamlyn is proud to be the first to offer **Fire Rated Profiles** to enhance our extensive catalog of extruded aluminum trim! The addition of a factory applied intumescent strip along the back wall of the profile enables drywall designs to achieve 1 hour and 2 hour fire ratings without the requirement of an extra layer of drywall. The intumescent strip expands when exposed to increased heat during a fire and will completely seal off the gap in drywall preventing the passage of fire.

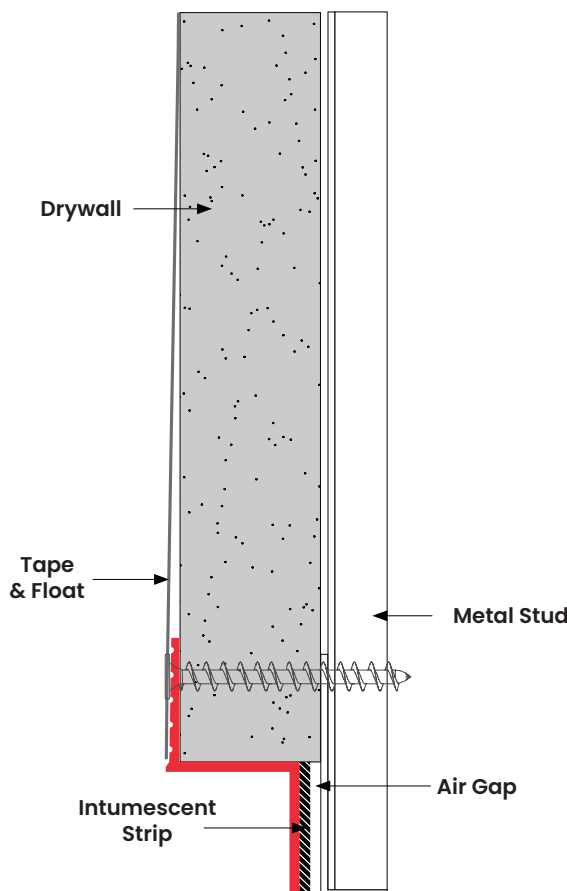
XtremeInterior Fire Rated Profiles have been 3rd party fire tested per ASTM E119, Standard Test Methods for Fire Test of Building Construction and Materials are listed under report number WFCi Report #20091.

PATENT NUMBER: 9,371,644

DESIGN FEATURES

Versatile shadow line piece. Ideal for transitioning between drywall and other materials or drywall and floors. Ridged face provided for tape and float and pre-punched holes for easy install (hole placement may vary). Can be used in conjunction with drywall, panel installation and wrapped surface finishes such as fabric or vinyl wall coverings.

Available in 10' length. 6063 T5 aluminum with standard clear anodized or primed finish. Anodized color and powder coating finishes available with custom color matching.

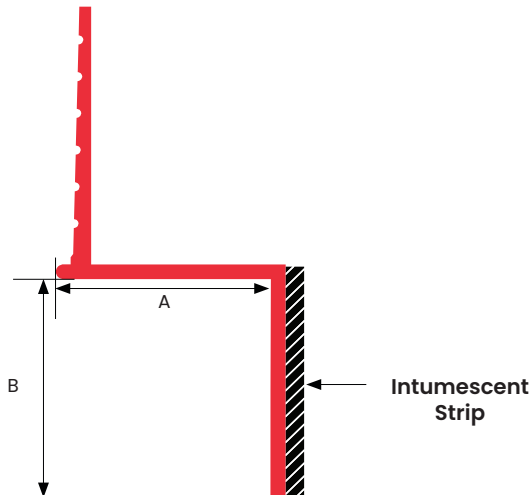


ITEM ID	A	B
MZRFR14-14	1/4"	1/4"
MZRFR5-12	1/2"	1/2"
MZRFR5-100	1/2"	1"

XtremeInterior: Fire Rated Profiles
MZRFR - FIRE RATED Z MOLD

Tech Support / Sales: 800-334-1676
www.tamlyn.com

2 Hour



XtremeInterior by Tamlyn is proud to be the first to offer **Fire Rated Profiles** to enhance our extensive catalog of extruded aluminum trim! The addition of a factory applied intumescent strip along the back wall of the profile enables drywall designs to achieve 1 hour and 2 hour fire ratings without the requirement of an extra layer of drywall. The intumescent strip expands when exposed to increased heat during a fire and will completely seal off the gap in drywall preventing the passage of fire.

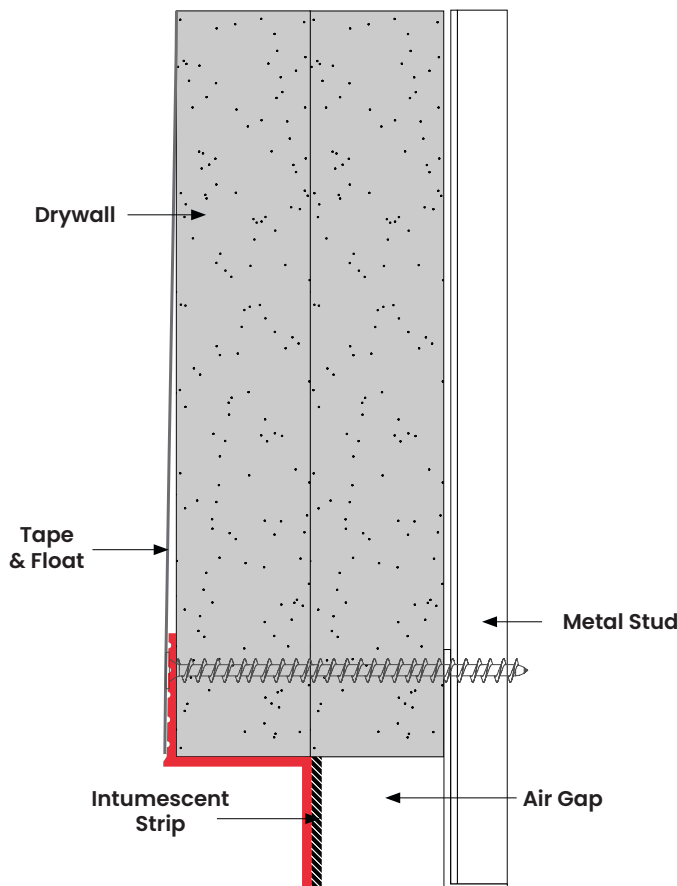
XtremeInterior Fire Rated Profiles have been 3rd party fire tested per ASTM E119, Standard Test Methods for Fire Test of Building Construction and Materials are listed under report number WFCi Report #20091.

PATENT NUMBER: 9,371,644

DESIGN FEATURES

Versatile shadow line piece. Ideal for transitioning between drywall and other materials or drywall and floors. Ridged face provided for tape and float and pre-punched holes for easy install (hole placement may vary). Can be used in conjunction with drywall, panel installation and wrapped surface finishes such as fabric or vinyl wall coverings.

Available in 10' length. 6063 T5 aluminum with standard clear anodized or primed finish. Anodized color and powder coating finishes available with custom color matching.



ITEM ID	A	B
MZRFR14-14	1/4"	1/4"
MZRFR5-12	1/2"	1/2"
MZRFR5-100	1/2"	1"
MZRFR-14	5/8"	1/4"
MZRFR-12	5/8"	1/2"
MZRFR-100	5/8"	1"