

### DESIGN FEATURES

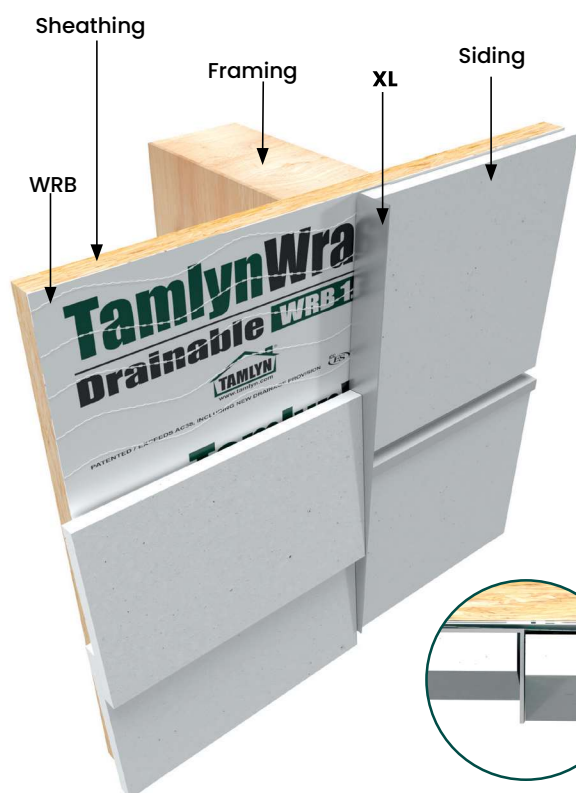
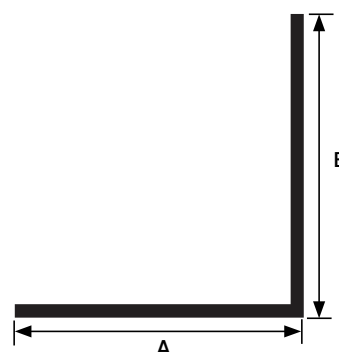
Simple angle trim that can be adaptively used for multiple applications such as transition from panel to siding. Can also be used for facade/soffit transition and as an abutted stop alongside windows and doors.

### MATERIAL

6063-T5 .045 "  $\pm$  .005 extruded aluminum alloy with proprietary coating that protects against harsh weather conditions and allows for paint adhesion. For all other finish options refer to page 20.

### NOTE

Do not install XtremeTrim® L Trim on horizontal applications where the exterior flange can catch/hold water.



All measurements are nominal

ITEM ID	A	B
XL12	1/2"	1/2"
XL34	3/4"	3/4"
XL1	1"	1"
XL112	1-1/2"	1-1/2"

All parts are 10' Length unless otherwise indicated