

**Details for Stucco Application**

Tech Support / Sales: 800-334-1676  
www.tamlyn.com

**BASIC STUCCO ASSEMBLY**

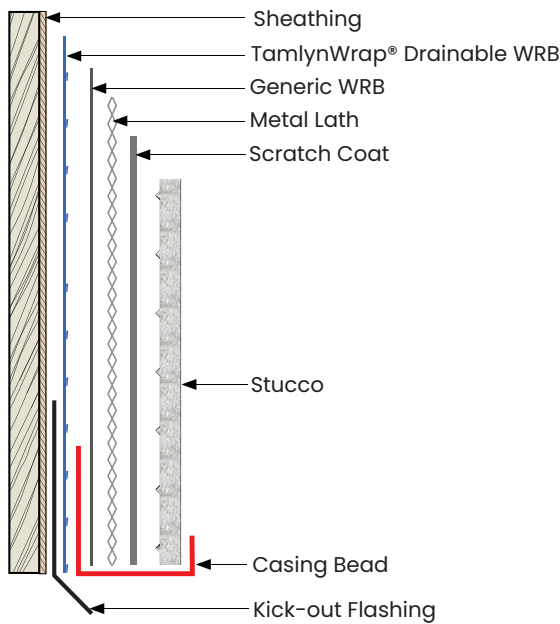


**RAINSCREEN STUCCO ASSEMBLY**



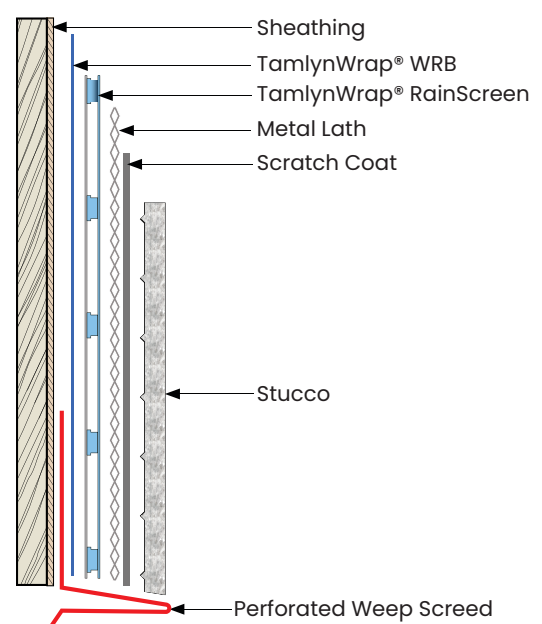
**Bottom Detail [A]: Casing Bead**

**BASIC STUCCO ASSEMBLY**



**Bottom Detail [B]: Weep Screed**

**RAINSCREEN STUCCO ASSEMBLY**



**NOTE-** The second layer of water-resistant barrier (**WRB**) in Detail (A) serves as an intervening layer, or “bond break”, from the scratch coat to help maintain the drainage gap required. In Detail (B), the Rainscreen layer meets this requirement. Other plaster systems similar.